



Chu Chua North Project

Alterra Mining Inc.

February 2022

Important Notice and Disclaimer

These statements, maps, models and data for the Chu Chua North (the "Project") provided in this presentation are based on information currently available to Locarno Advisory Inc. ("Locarno") and Locarno provides no assurance that actual results will meet the Project expectations. In certain cases, forward-looking information may be identified by such terms as "anticipates", "believes", "could", "estimates", "expects", "may", "shall", "will", or "would". Forward-looking information contained in this presentation is based on certain factors and assumptions including but not limited to among other things, the estimation of mineral resources and mineral reserves, the realization of resource estimates and reserve estimates, metal prices, the timing and amount of future exploration and development expenditures, the estimation of initial and sustaining capital requirements, the estimation of labour and operating costs, the availability of necessary financing and materials to continue to explore and develop the Project in the short and long-term, the progress of exploration and development activities, the receipt of necessary regulatory approvals, the completion of the environmental assessment process, and assumptions with respect to currency fluctuations, environmental risks, title disputes or claims, and other similar matters. While Locarno considers these assumptions to be reasonable based on information currently available to it, they may prove to be incorrect.

Forward looking information involves known and unknown risks, uncertainties and other factors which may cause the actual results, performance or achievements of the Project to be materially different from any future results, performance or achievements expressed or implied by the forward-looking information. Such factors include risks inherent in the exploration and development of mineral deposits, including risks relating to changes in project parameters as plans continue to be redefined including the possibility that mining operations may not commence at the Project, risks relating to variations in mineral resources and mineral reserves, grade or recovery rates resulting from current exploration and development activities, risks relating to changes in metal prices and the worldwide demand for and supply of base and precious metals, risks related to increased competition in the mining industry generally, risks related to current global financial conditions, uncertainties inherent in the estimation of mineral resources and mineral reserves, access and supply risks, reliance on key personnel, operational risks inherent in the conduct of mining activities, including the risk of accidents, labour disputes, weather related risks, increases in capital and operating costs and the risk of delays or increased costs that might be encountered during the development process, regulatory risks, including risks relating to the acquisition of the necessary licenses and permits, financing, capitalization and liquidity risks, including the risk that the financing necessary to fund the exploration and development activities at the Project may not be available on satisfactory terms, or at all, risks related to disputes concerning property titles and interest, and environmental risks. Locarno does not undertake to update any forward-looking information that may be made from time to time by the Locarno or on its behalf, except in accordance with applicable regulatory, security and local laws.

Contents

1	Executive Summary	3
2	Chu Chua North - Massive Sulphide Target	5
3	Chu Chua North - Massive Sulphide Target Compilation	8
4	Chu Chua North - Regional Target	14
5	Summary	20



1

Executive Summary



Executive Summary

- The Chu Chua North property (“CCN”) covers 5,778 hectares with easy road access approximately 60 km north of Kamloops, BC
- The area surrounding the CCN Property hosts a prolific copper mineralizing environment including:
 - The Samatosum, Homestake, Windpass-Sweethome past producing mines
 - The Yellowhead large, low-grade advanced Cu-VMS deposit currently in the pre-production permitting phase
 - Numerous additional regional mineral prospects
- The CCN property surrounds the high grade Chu Chua Copper deposit which hosts an Inferred resource of **2.5 million tonnes** grading **2.0% copper, 9.4 gpt silver, 0.5 gpt gold** defined over approximately a 400 m strike length and 180m depth
- Chu Chua Copper’s growth potential is limited by the size of their claim block and the proximity of the CCN claims
- **Two parallel volcanic massive sulphide targets (Massive Sulphide Targets) have been defined approximately 450 m directly south along strike from Chu Chu Copper**
- **The Massive Sulphide Targets strike over 650 metres and 450 metres in length, 135 metres and 95 metres in width respectively and remain untested by drilling**
- These targets are defined by a combination of surface ferrocrete development, geochemistry (up to 2700 ppm in soils), airborne and ground geophysics and geology
- All signatures are similar to Chu Chua Copper
- **7 additional massive sulphide targets including VMS showings, geophysical, geochemical and geological targets are defined on CCN property**
- Anomalous copper values define a large potential VMS mineralizing system over a nine kilometer north–south strike length
- **Anomalous copper values include:**
 - **1.5% copper (Target 2)**
 - **1.8% copper (Target 4)**
 - **1.4% copper (Target 5)**
 - **1.0 copper (historic MMC ddh)**
 - **Rock sample values up to ranging from 1370 - 750 ppm copper**
 - **Large soil geochem anomaly up to 250 pp**
- The CCN claim block exhibits the characteristics of and has potential to host numerous additional VMS copper deposits

2

Chu Chua North - Massive Sulphide Target



Location

Chu Chua North Located Within Excellent Access and Infrastructure

- The Chu Chua North property (“CCN”) is located approximately 60 km north of Kamloops, BC
- Access is via highway 5 and a series of well maintained logging roads
- Excellent access to services via Kamloops



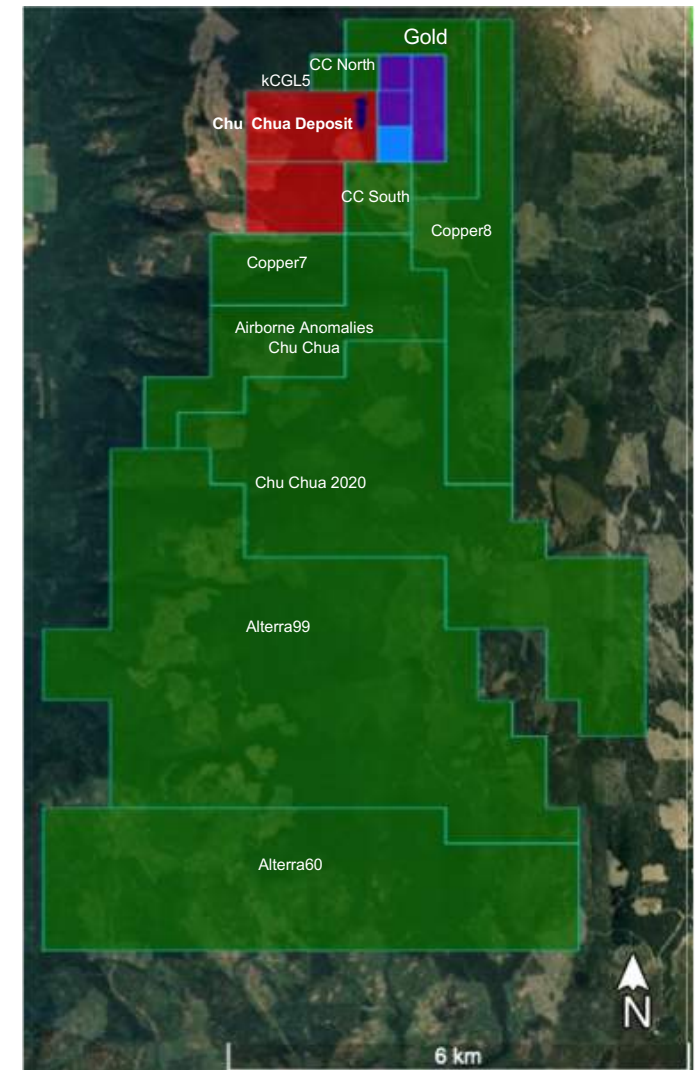
Source: Google Earth Pro

Property Claims

Large property package covers excellent prospective geology

- The Chu Chua North property covers approximately 5777.97 ha
- The property package includes claims under option from Ellerbeck and Locke and adjacent the Chu Chua deposit
- Claims cover interpreted geological extension of a VMS system having at least 9 km of strike length beginning at the Chu Chua Deposit
- Legend
 - Red - Newport Exploration Ltd.
 - Green - Alterra Mining Inc.
 - Blue - Razzle Resources
 - Purple - Billingsley

Tenure No	Tenure Name	Ha	Issue Date	Good to Date	Owner
1075133	AIRBORNE ANOMALIES CHU CH	403.73	2020Mar10	2030Dec04	Ellerbeck-Locke 50%-50%
523841	KCGL5	20.17	2005Dec13	2030Dec04	Ellerbeck-Locke 50%-50%
1055177	CC NORTH	20.17	2005Dec13	2030Dec04	Ellerbeck-Locke 50%-50%
1029016	SUBD 1028788 CC SOUTH	80.72	2005Dec13	2030Dec04	Ellerbeck-Locke 50%-50%
		524.80			
1078537	CHU CHUA 2020	1231.92	2020Sept09	2023Dec30	Tornroos, Neil Eric 100%
1079714	COPPER7	161.47	2020Nov24	2023Dec30	Tornroos, Neil Eric 100%
1078770	GOLD	181.57	2020Sept19	2023Dec30	Tornroos, Neil Eric 100%
1079715	COPPER8	464.23	2020Nov24	2023Dec30	Tornroos, Neil Eric 100%
1082240	ALTERRA99	2001.06	2021Apr18	2023Dec30	Tornroos, Neil Eric 100%
1082241	ALTERRA60	1212.82	2021Apr18	2023Dec30	Tornroos, Neil Eric 100%
		5253.07			
	Total hectares	5777.87			



Source: Google Earth Pro, aris.empr.gov.bc.ca, Technical Report on Chu Chua North Property, British Columbia, Canada June 21, 2021,

3

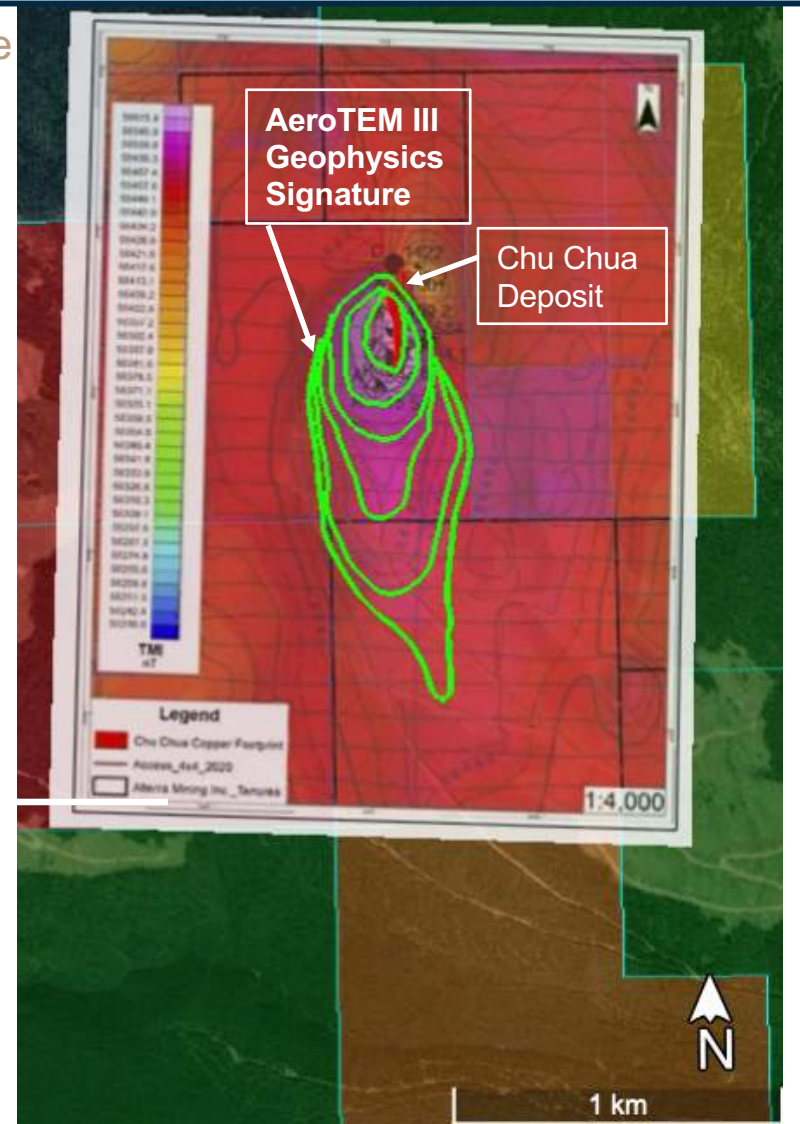
Chu Chua North - Massive Sulphide Target 1



AeroTEM III Airborne Geophysics

VMS deposit outlined by broad Airborne AeroTEM III signature

- 2008 airborne AeroTEM III outlines 1.4 km north-south geophysics signature coincident with the Chu Chua deposit
- Signature suggests a plunging mineralization system and/or mineralization at depth

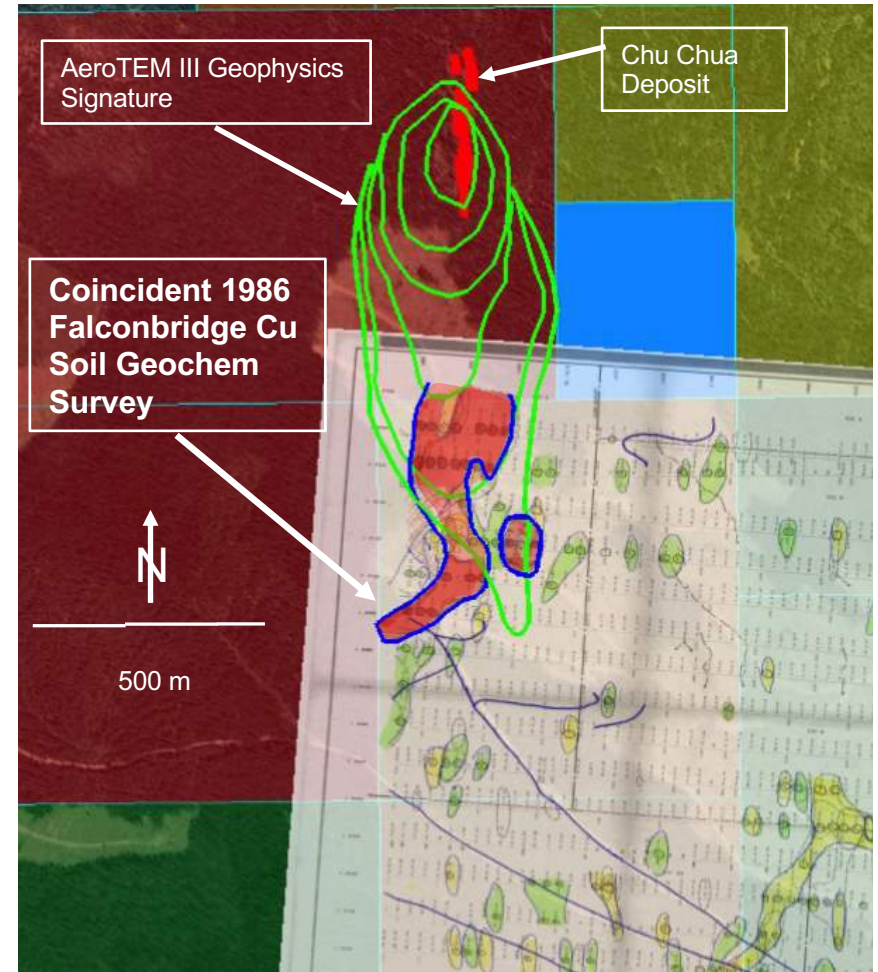


Source: Google Earth Pro, Technical Report on Chu Chua North Property, British Columbia, Canada June 21, 2021

Falconbridge Geochem Survey

Large Soil geochem outlines significant anomalies

- 1986 Falconbridge (FL) soil geochem survey with primary focus on geology to east and south of Chu Chua deposit
- Anomalous soil Cu geochem target defined approximately 450 m south along strike from Chu Chua deposit
- Coincident with 2008 AeroTEM III geophysics signature and significant copper enriched surface ferrocrete development
- **Defined over approximately 600 m length by 400 m width**
- **Anomalous soil geochem values range from 60 ppm to 2700 ppm Cu**
- Cu Geochem Legend
 - Red contour - 300 ppm to >2700 ppm
 - Brown contour – 200 ppm - 300 ppm
 - Yellow contour – 100 ppm - 200 ppm
 - Green contour - 60 ppm – 100 ppm

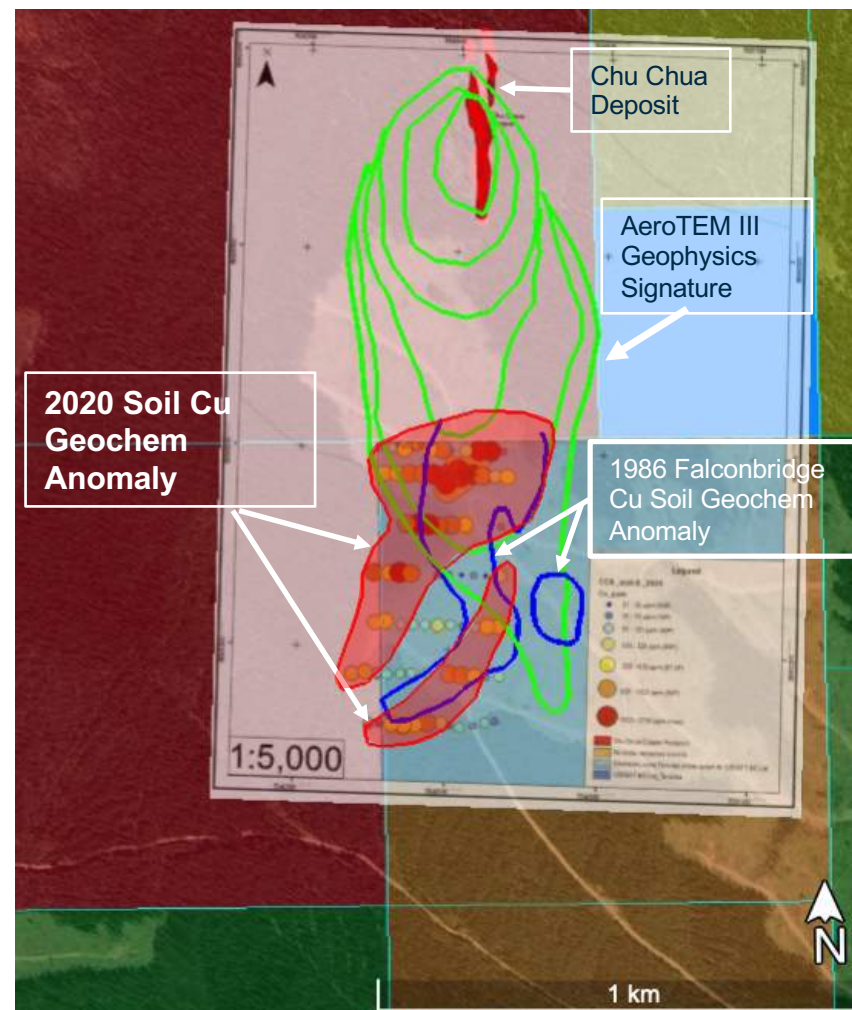


Source: Google Earth Pro, Technical Report on Chu Chua North Property, British Columbia, Canada June 21, 2021, Assessment Report 15.385 - Chu Chua Option Report on the 1986 Work Programme, December 1986.

2020 Reconnaissance Geochem Survey

Well defined anomaly along strike with the Chu Chua Deposit

- 2020 reconnaissance Cu soil geochem outlines two parallel geochem anomalies striking approximately **650 metres and 450 metres** in length and **135 metres and 95 metres in width** respectively
- Copper in soil geochem values range from sub anomalous **35 ppm to 2700 ppm**
- Both are coincident with:
 - Falconbridge soil geochem
 - AeroTEM III airborne geophysics signature
- On strike with the Chu Chua deposit

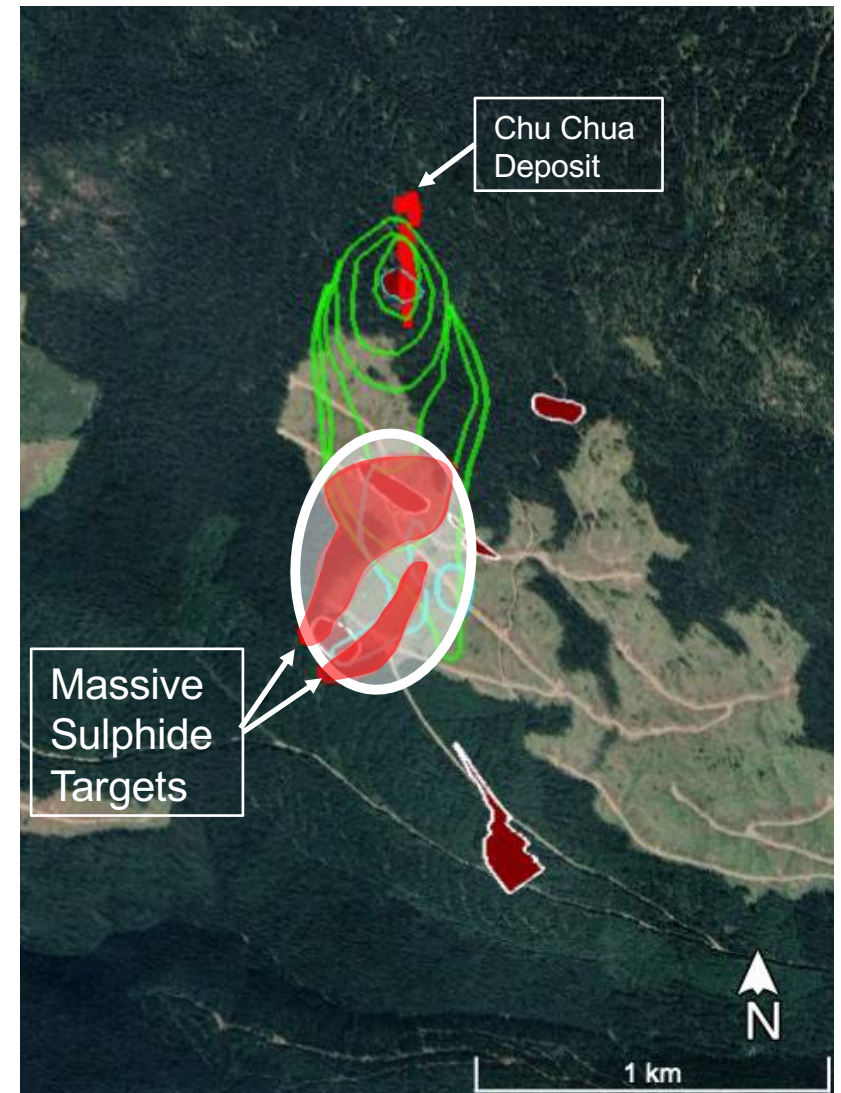


Source: Google Earth Pro, BC AR 34983 Definition of Copper and Gold Drill Targets on Chu Chua Property, South-Central British Columbia, September 30, 2014, Assessment Report 15,385 - Chu Chua Option Report on the 1986 Work Programme, December 1986,

Massive Sulphide Target

Large Potential Massive Sulphide Targets

- The combination of geophysics, geochem, geology including surface ferrocrete development defines a two potential massive sulphide targets
- Strike lengths of approximately 700 by 135 metres and 450 by 95 metres respectively are **comparable in surface dimensions to the Chu Chua Copper**
- Further exploration includes:
 - Additional ground EM-Mag/IP geophysics
 - Definition of drill targets and design of drill programs



Source: Google Earth Pro, BC AR 34983 Definition of Copper and Gold Drill Targets on Chu Chua Property, South-Central British Columbia, September 30, 2014, Assessment Report 15,385 - Chu Chua Option Report on the 1986 Work Programme, December 1986,

4

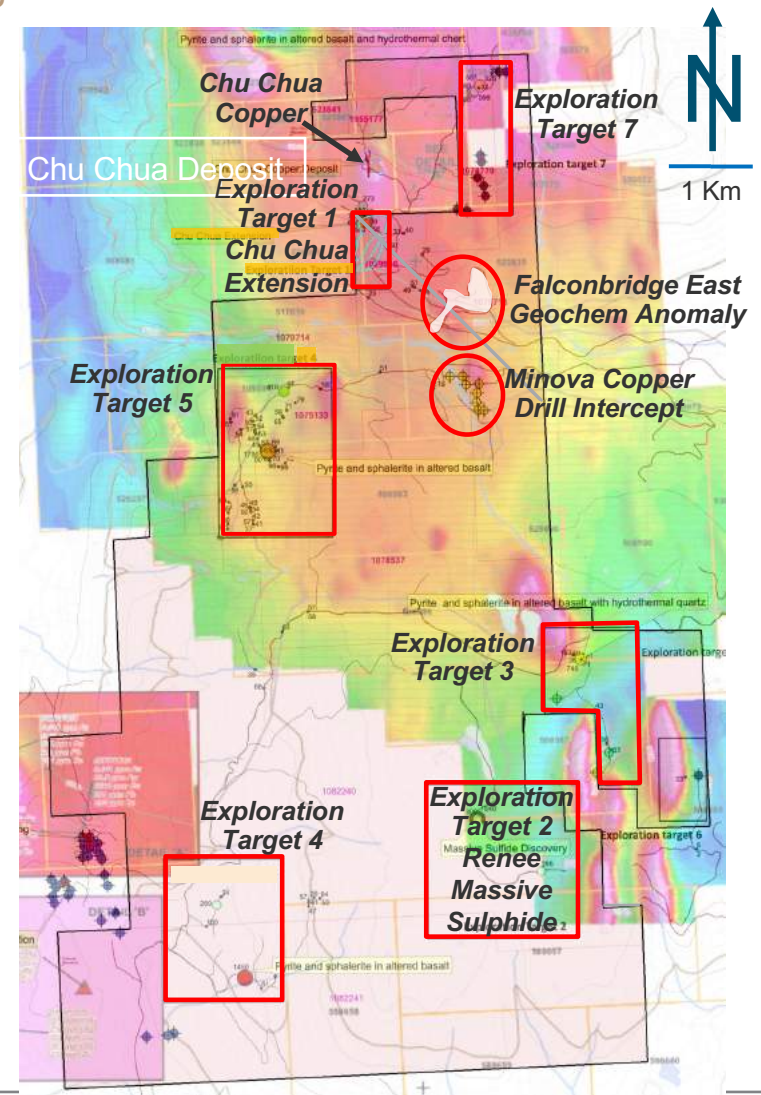
Chu Chua North - Regional Exploration



Regional Exploration Targets

Considerable value to be unlocked by extensive exploration programs

- The CCN property hosts the geological environment conducive to a significant VMS mineralizing system
- **At least 7 of additional regional targets identified for copper potential along potential north south trending “volcanic spines” remain underexplored**
- Targets appear part of the geological extension of a VMS system having at least 9 km of strike length
- New and increased outcrop exposures hosting anomalous copper values are identified via new and historic logging road development
- The CCN property remains significantly underexplored including historical geochem anomalies, coincident airborne geophysics signatures and drill intercepts remain underexplored beyond identified target



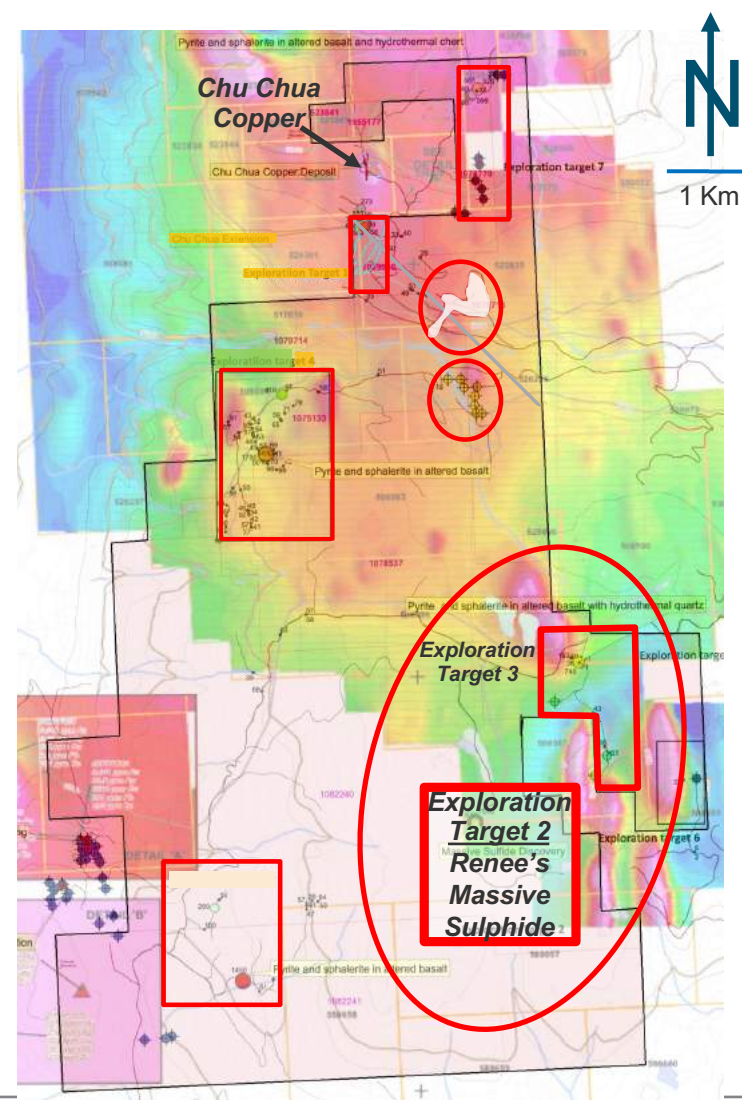
Source: Assessment Report 15,385 - Chu Chua Option Report on the 1986 Work Programme, December 1986, Assessment Report 20670 – Assessment Report on the 1990 diamond drilling program on Chu 1-3, November 1990, Technical Report on Chu Chua North Property, British Columbia, Canada June 21, 2021, Assessment Report-New Discoveries at Chu Chua North Property, British Columbia, Canada, February 7, 2022

Regional Exploration Target 2 - Renee's Massive Sulphide

First New Surface Massive Sulphide Discovery Since 1977

- Most significant 2021 discovery, defined by massive pyrite and associated altered volcanics
- Numerous massive sulfide boulder occurrences along historic logging roads suggests:
 - Region has not been thoroughly prospected
 - Other potential surface showings have been overlooked
- Numerous anomalous metal values persist over the target area
- **Rock sample values include:**
 - **1540 ppm**
 - **299 ppm**
 - **195 ppm**
 - **Anomalous gold values 58 ppb and 41 ppb**
 - **Elevated zinc concentrations**
- Rock samples 1 km southeast of *Renee's Massive Sulfide* elevated values of:
 - Cu 295 ppm
 - Zn 356 ppm
- The samples demonstrate a Cu-Au-Zn signature characteristic of the *Chu Chua Copper*.
- Massive pyrite within basalt volcanics confirms the volcanogenic massive sulfide model

Source: Assessment Report 15,385 - Chu Chua Option Report on the 1986 Work Programme, December 1986, Assessment Report 20670 – Assessment Report on the 1990 diamond drilling program on Chu 1-3, November 1990, Technical Report on Chu Chua North Property, British Columbia, Canada June 21, 2021, Assessment Report-New Discoveries at Chu Chua North Property, British Columbia, Canada, February 7, 2022

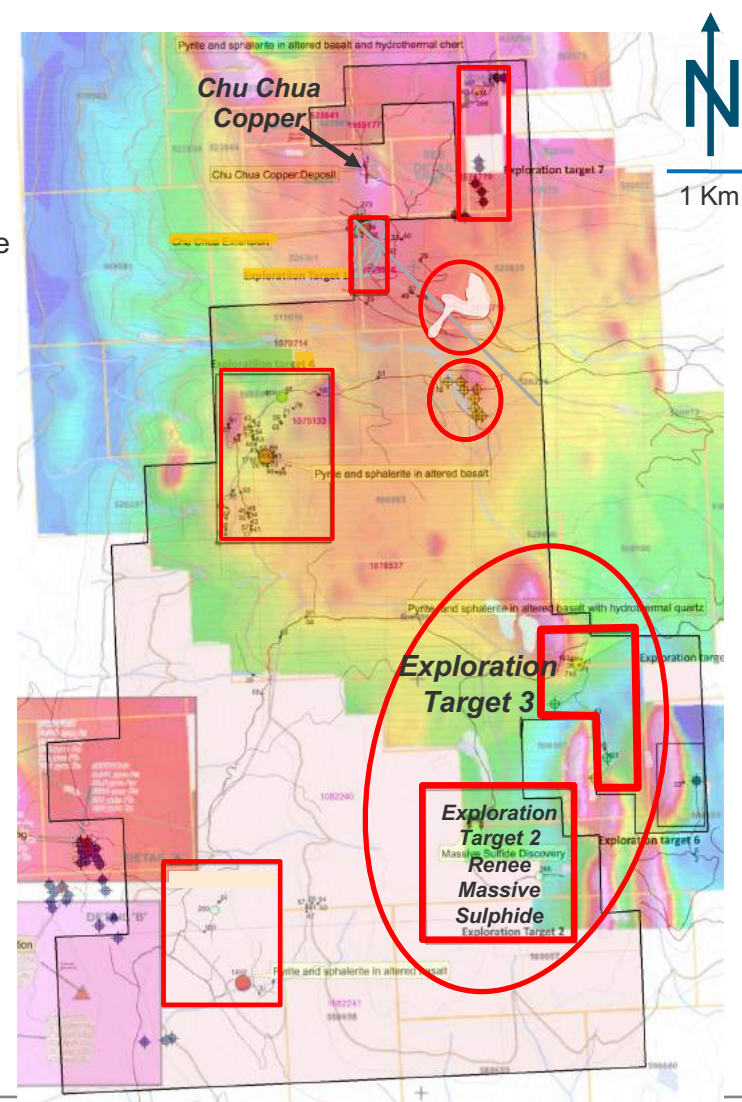


Regional Exploration Target 3

Hosting similarities to Chu Chua Copper

- Target 3 hosts pyrite/pyrrhotite-rich silicified, veined and brecciated basalt
- Located 2.2 km northeast of *Target 2 Massive Sulfide*
- Anomalous copper geochem values occur proximal airborne magnetic geophysical signature
- Target 3 potentially linked geologically to Target 2 mineralizing system
- Rock samples results from bedrock exposures include:
 - 740 ppm Cu
 - 163 ppm Cu
 - 191 ppm Cu
 - 1210 ppm Zn
 - 11 ppb Au
- Elevated Cu-Zn-Au signature is consistent and comparable with *Chu Chua Copper Deposit*
- Target 3 is lithologically comparable to geology proximal to the Chua Chua Deposit
- Target is untested with additional geochem, geophysics or drilling

Source: Assessment Report 15,385 - Chu Chua Option Report on the 1986 Work Programme, December 1986, Assessment Report 20670 – Assessment Report on the 1990 diamond drilling program on Chu 1-3, November 1990, Technical Report on Chu Chua North Property, British Columbia, Canada June 21, 2021, Assessment Report-New Discoveries at Chu Chua North Property, British Columbia, Canada, February 7, 2022

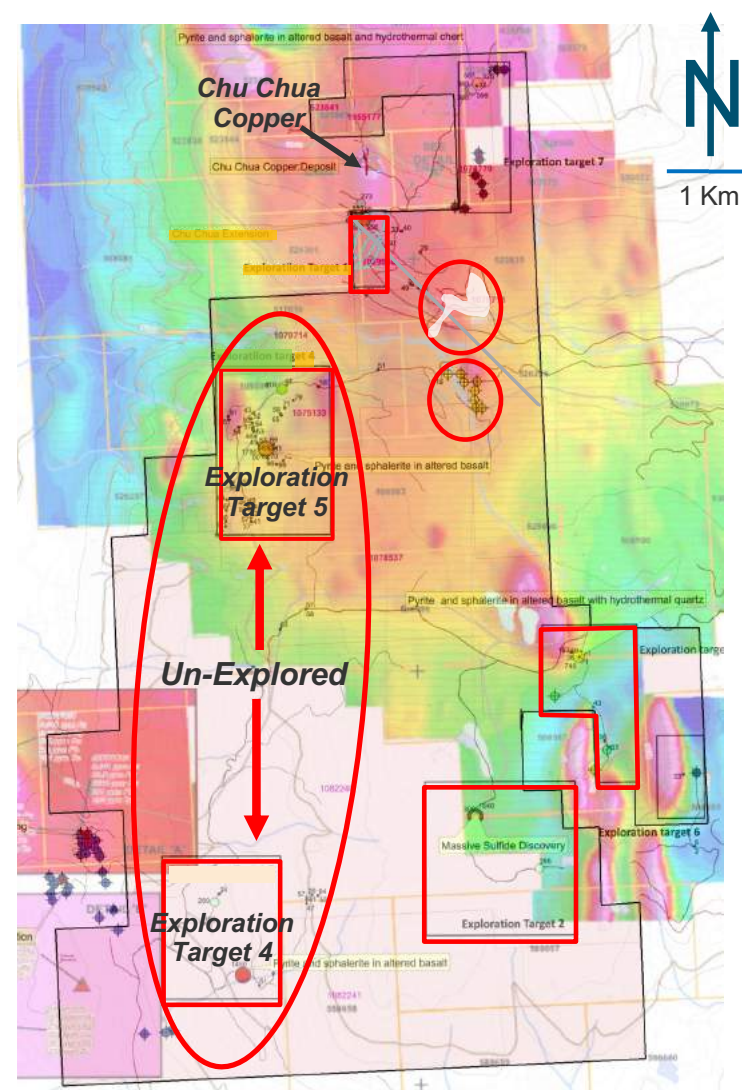


Regional Exploration Target 4 and 5

Considerable strike length remains unexplored programs

- **Target 4 and 5** identified in a geological environment conducive for VMS deposition including:
 - Veined, brecciated and silicified basalt hosting disseminated pyrite, ± pyrrhotite
 - Diabase and gabbro intrusives providing heat engine for mineralized fluid flow and metal deposition
 - Airborne magnetic geophysics signatures coincident with and proximal to anomalous copper geochem values
- **Target 4** rock sample copper values collected over an area of 750 metres by 950 metres include:
 - 1450 ppm
 - 260 ppm
 - 180 ppm
- **Target 5** 2020 rock samples returned copper values including:
 - 1410 ppm
 - 432 ppm
 - 410 ppm
- **2021 follow up sampling program** confirmed 2020 copper values including:
 - 1790 ppm
 - 185 ppm
- Target 4 and 5 remained significantly underexplored by geophysics, geochem, drilling
- Large land package between Target 4 and 5 remains unexplored

Source: Assessment Report 15,385 - Chu Chua Option Report on the 1986 Work Programme, December 1986, Assessment Report 20670 – Assessment Report on the 1990 diamond drilling program on Chu 1-3, November 1990, Technical Report on Chu Chua North Property, British Columbia, Canada June 21, 2021, Assessment Report-New Discoveries at Chu Chua North Property, British Columbia, Canada, February 7, 2022



Regional Exploration - Target 7/Falconbridge/Minnova

“Volcanic Spine” of mineralization

Target 7, Falconbridge Geochem Anomaly and Minnova drill intercept occur within a 9 kilometre “Volcanic Spine” corridor on strike with Renee’s Massive Sulphide new discovery and Target 3

Target 7

- Elevated copper values hosted in geology similar to Target 3 including:
- **2020 rock samples returned copper values of:**
 - 661 ppm
 - 598 ppm
 - 526 ppm
 - 366 ppm
 - 360 ppm
- Geology and anomalous copper values is interpreted as indicating proximity to a volcanic vent and VMS mineralizing system.

Falconbridge Geochem Anomaly

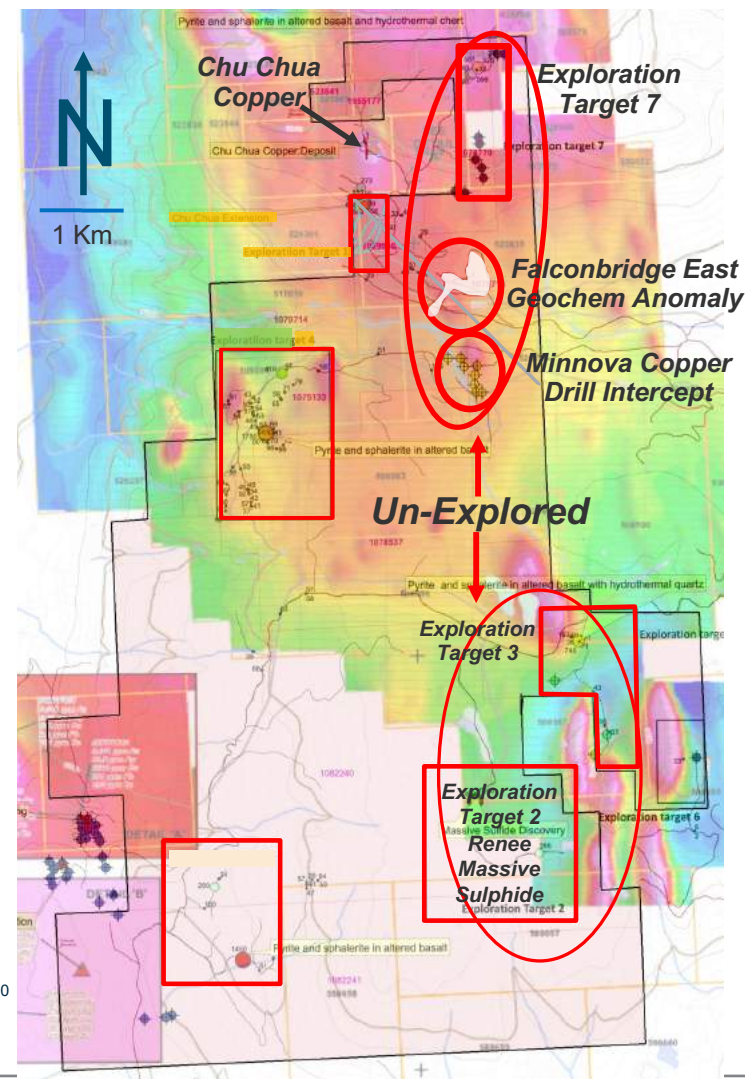
- **Subtle copper geochem soil anomaly approximately 1.0 kilometre by 300 metres over thick overburden cover**
- **Copper in soil values range within contour from approximately 65 ppm to 250 ppm**
- Coincident geophysics highlight structure and potential sulphide mineralization
- Target remains untested with follow up geochem, geophysics and drilling

Minnova Drill Intercept

- A narrow (15cm) section of semi-massive sulphide 3% chalcopyrite intercepted within geology similar to Target 3 and Target 7
- **Copper values of 1.02% returned**
- Untested airborne geophysics coincident the massive sulphide intercept

2.5 kilometer gap between Minnova drill intercept and Target 3 remains untested by geochem, geophysics, geology and drilling

Source: Assessment Report 15,385 - Chu Chua Option Report on the 1986 Work Programme, December 1986, Assessment Report 20670 – Assessment Report on the 1990 diamond drilling program on Chu 1-3, November 1990, Technical Report on Chu Chua North Property, British Columbia, Canada June 21, 2021, Assessment Report-New Discoveries at Chu Chua North Property, British Columbia, Canada, February 7, 2022



Summary

- The Chu Chua North property (“CCN”) covers 5,778 hectares with easy road access approximately 60 km north of Kamloops, BC
- The area surrounding the CCN Property hosts a prolific copper mineralizing environment including:
 - The Samatosum, Homestake, Windpass-Sweethome past producing mines
 - The Yellowhead large, low-grade advanced Cu-VMS deposit currently in the pre-production permitting phase
 - Numerous additional regional mineral prospects
- The CCN property surrounds the high grade Chu Chua Copper deposit which hosts an Inferred resource of **2.5 million tonnes** grading **2.0% copper, 9.4 gpt silver, 0.5 gpt gold** defined over approximately a 400 m strike length and 180m depth
- Chu Chua Copper’s growth potential is limited by the size of their claim block and the proximity of the CCN claims
- **Two parallel volcanic massive sulphide targets (Massive Sulphide Targets) have been defined approximately 450 m directly south along strike from Chu Chu Copper**
- **The Massive Sulphide Targets strike over 650 metres and 450 metres in length, 135 metres and 95 metres in width respectively and remain untested by drilling**
- These targets are defined by a combination of surface ferrocrete development, geochemistry (up to 2700 ppm in soils), airborne and ground geophysics and geology
- All signatures are similar to Chu Chua Copper
- **7 additional massive sulphide targets including VMS showings, geophysical, geochemical and geological targets are defined on CCN property**
- Anomalous copper values define a large potential VMS mineralizing system over a nine kilometer north–south strike length
- **Anomalous copper values include:**
 - **1.5% copper (Target 2)**
 - **1.8% copper (Target 4)**
 - **1.4% copper (Target 5)**
 - **1.0 copper (historic MMC ddh)**
 - **Rock sample values up to ranging from 1370 - 750 ppm copper**
 - **Large soil geochem anomaly up to 250 pp**
- The CCN claim block exhibits the characteristics of and has potential to host numerous additional VMS copper deposits